

Edinburgh Napier University – ENSA

Ambition for Student Partnership

Introduction

The University and Edinburgh Napier Students' Association are committed to enhancing the experiences of our students through a partnership approach, which places students at the heart of learning and teaching. We are proud of what we have achieved together in student engagement and partnership, and we aspire to do more.

This document is informed by sector reference points, [Scotland's Ambition for Student Partnership](#) and the [UK Quality Code for Higher Education](#), Principle 2, Engaging students as partners.

The Ambition for Student Partnership is co-created and co-owned by the University and ENSA and will be reviewed annually.

Our approach

The partnership between the University and ENSA is guided by the following principles:

- Mutual trust in one another's commitment to enhancing the student experience
- A commitment to empowering students to shape their university experience
- Honesty, transparency and openness
- Ongoing constructive dialogue

Our Ambition

Through our shared values (Professional, Ambitious, Innovative and Inclusive), we will advance our work so that all students are empowered to contribute as partners in the student experience, can influence change at all levels, and are aware of the impact they have on our diverse community.

Strategic themes

Following a detailed mapping of institutional practice to Scotland's Ambition for Student Partnership, the following themes were identified:

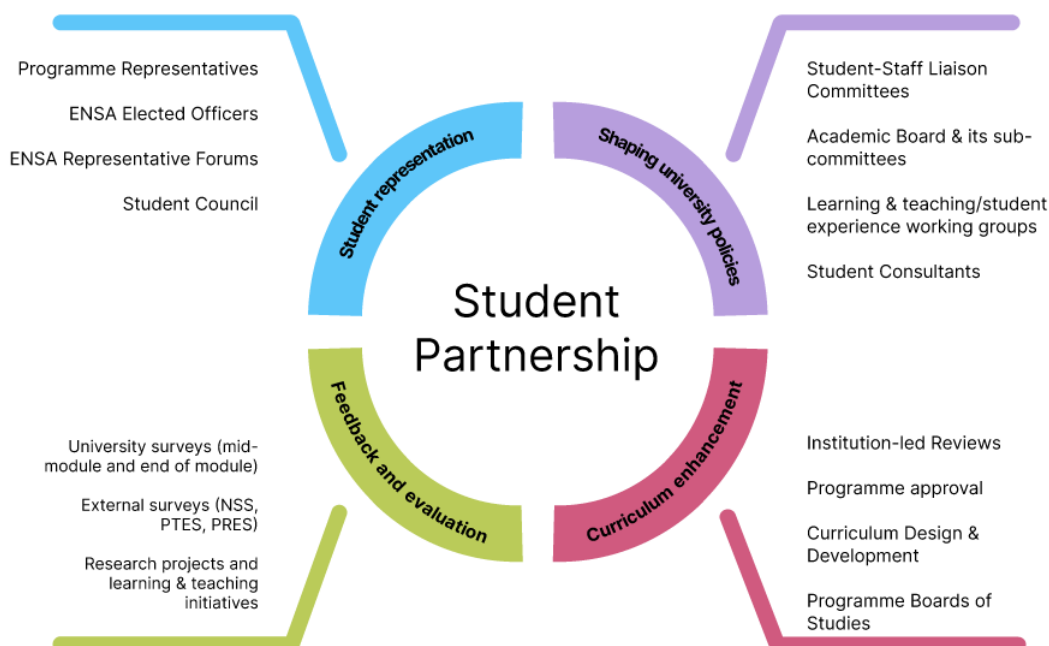
- Partnership diversity
- Staff development and recognition
- Data and evidence
- Impact and value of student contributions

These themes will provide a consistent framework for ongoing enhancement in student partnership. Each year they will be applied to a specific area of focus, ensuring sustained, coherent progress over time.

Measures of success

Our key success measure for partnership will be improved results in the National Student Survey (NSS), Postgraduate Taught Experience Survey (PTES) and Postgraduate Research Experience Survey (PRES) in areas relating to student voice, engagement and partnership, reflecting enhanced student engagement and satisfaction across the institution.

Partnership Opportunities



Annual Focus Topic

On an annual basis, data from a variety of sources will be considered to identify a focus topic for the new academic year. A recommendation will be presented to the University Education & Student Experience Committee at its first meeting of the academic year within the Student Engagement Report.

2025-2026 Focus - Student Voice

In 2025-2026 we will strengthen existing student voice approaches and support the creation of inclusive, well-structured and transparent opportunities for students to contribute as partners in shaping the quality of learning and the student experience at Edinburgh Napier.

Data from institutional sources, including from staff and student feedback, indicates that there are barriers to engagement with student voice opportunities. Our 2025-2026 focus on student voice seeks to address these barriers through targeted actions.

Student voice in the postgraduate research student experience will be explored through a thematic review led by the Doctoral College and presented to the Research & Innovation Committee.

Enablers

Our ambition in student voice will be realised by strengthening key enablers including representative structures, by enhancing training and support for students and staff engaging in partnership work, improving communication channels, and growing Edinburgh Napier's institutional culture of student-staff partnership by increasing external recognition of our work.

Measures of success

Progress towards our 2025-2026 aim will be measured against the targeted actions relevant to each enabling objective. This will be reported within the Student Engagement Report presented to the Education & Student Experience Committee in September 2026 together with findings from the Doctoral College thematic review.