

Adobe Creative Cloud for students

The **Adobe Creative Cloud** applications (such like Photoshop and Illustrator) for student labs and PCs will be delivered from the **Company Portal** app and installed **locally**.

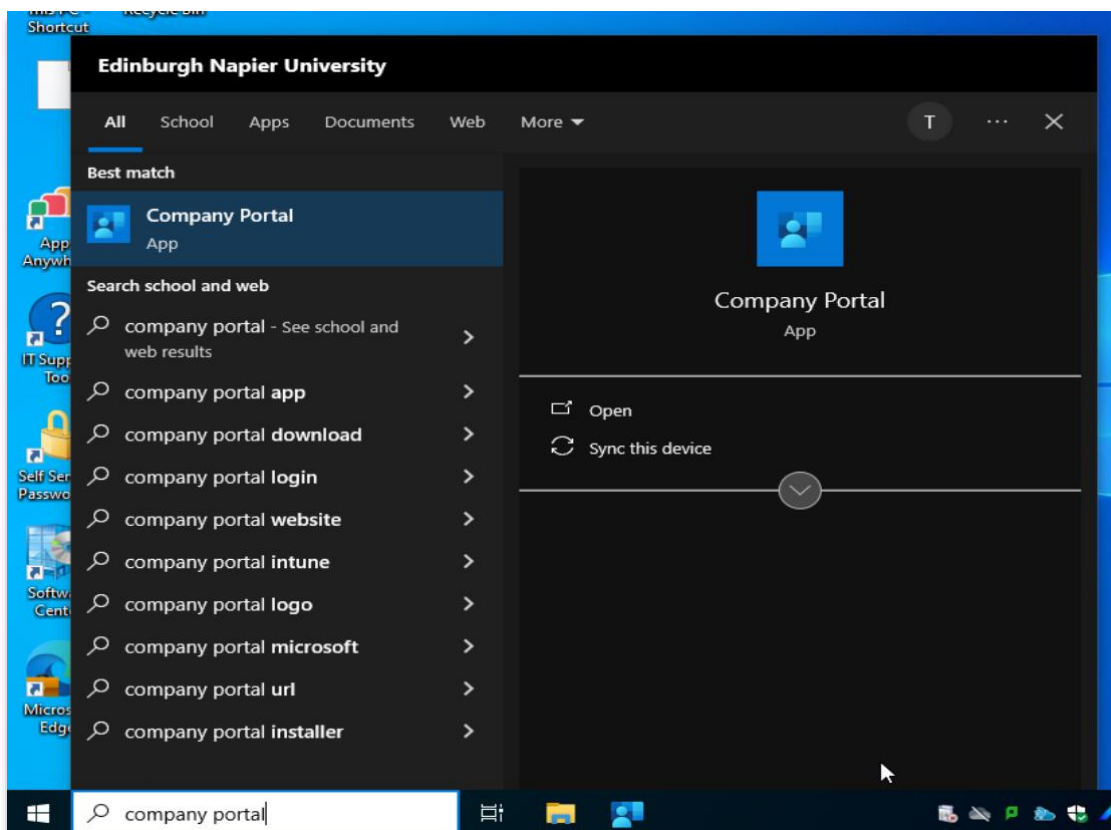
Please note: Adobe CC is not available on personal student machines or Lapsafe laptops to loan.

Adobe CC apps will no longer be run from AppsAnywhere to avoid unnecessary confusion.

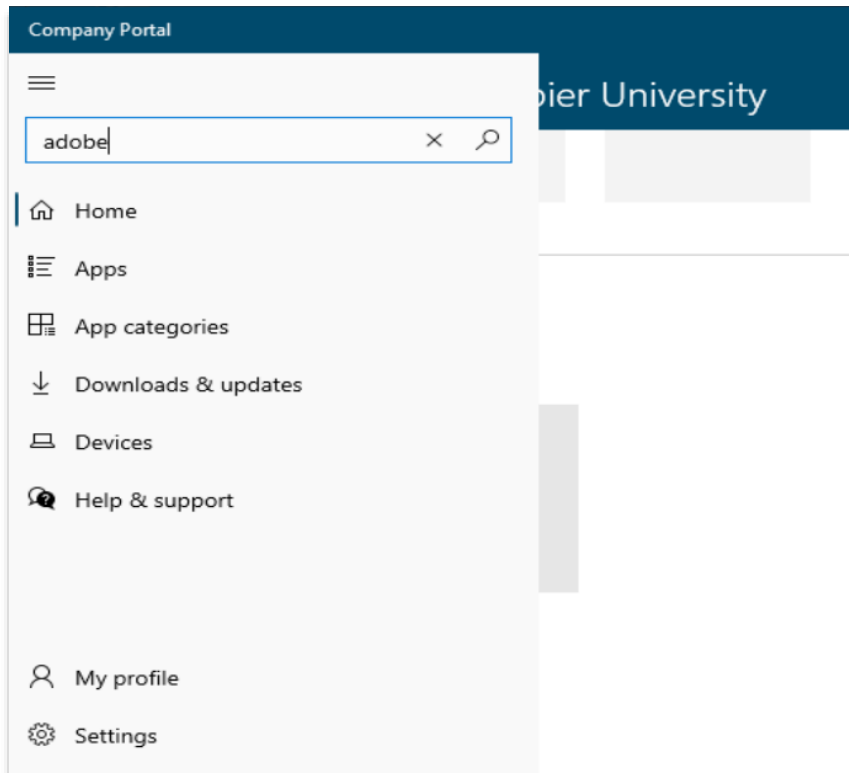
Once the **Adobe CC** apps have been installed (by you or a previous user on the computer), it can be opened to run from the **Start Menu** or from the **Search Toolbar Box**.

Installing Adobe Apps For First Time

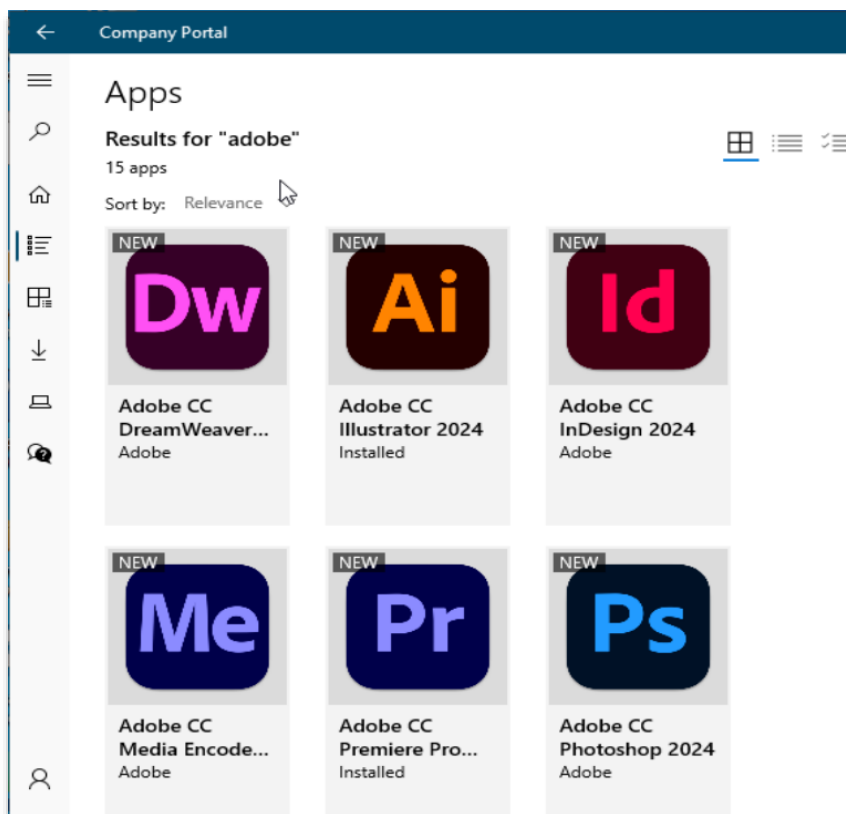
- In the **Search Toolbar Box** (with the magnifying glass symbol):
 - **Type: Company Portal.**
 - **Select the Company Portal** app from the results to open.



- Within the **Company Portal** app, **Click** on the magnifying glass symbol:
 - **Type: Adobe** (or the name the app like Photoshop for a narrower result).



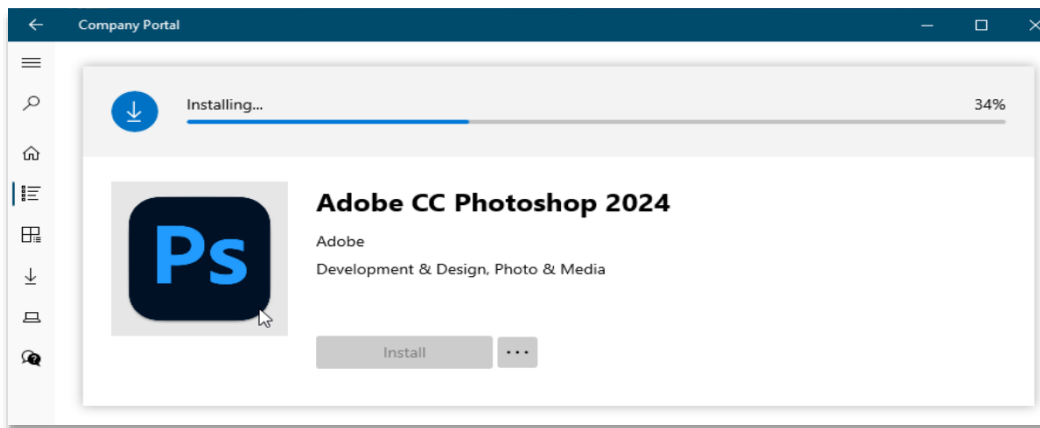
- From the list of search results:
 - Select the required **Adobe** app (e.g. Photoshop).



- The app details will be displayed:
 - **Click** on the **Install** button to start the installation.



- The installation will commence and display its progress:



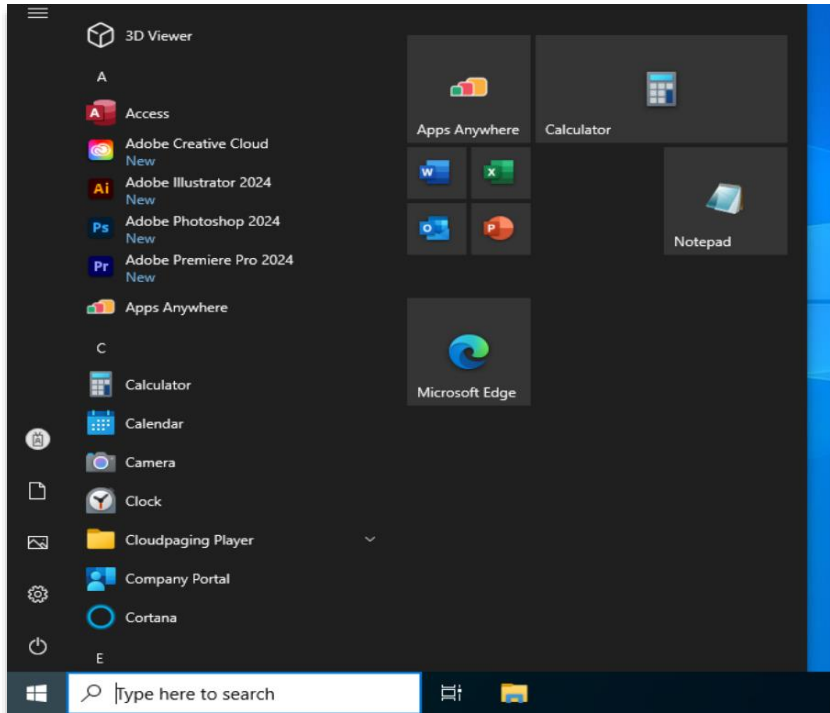
- It will display **Installed** with a **tick inside a blue circle** when complete:
 - **Click** on the **X** on the title bar to close the **Company Portal** app.



Running Adobe CC Apps

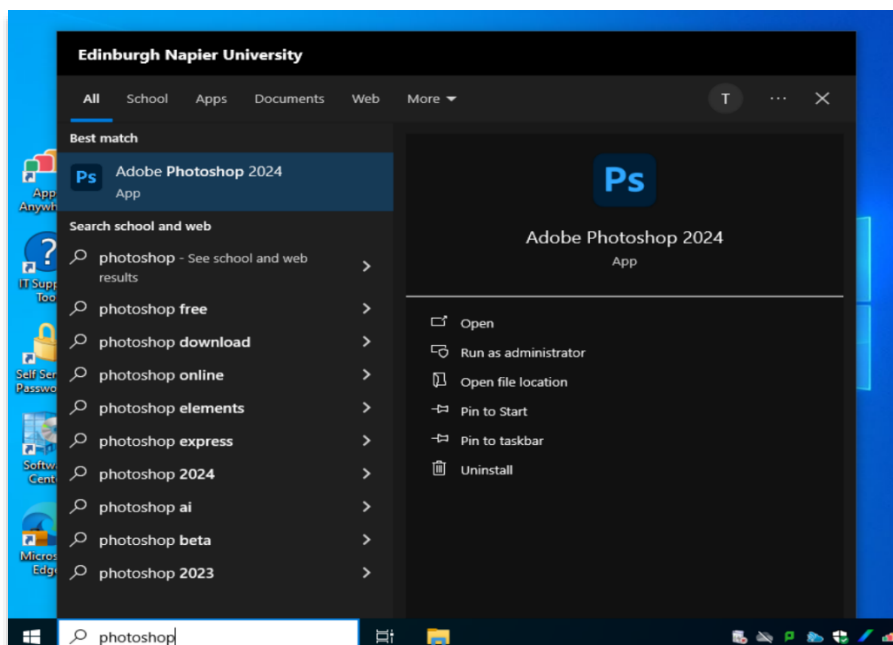
Method 1: Opening Adobe App from Start Menu

- Click on the **Window icon** on the bottom left corner of the desktop: a browser
 - The **Adobe** apps will appear under the “**A**” category of the pop up menu.
 - Select the desired **Adobe** app (e.g. Photoshop) to open.



Method 2: Opening Adobe App from Search Toolbar Box

- In the **Search Toolbar Box** (with the magnifying glass symbol):
 - **Type** the desired **Adobe** app. e.g. **Photoshop**.
 - **Select** the **Photoshop** app from the results to open.



Signing-in to Adobe Apps

When an **Adobe CC** app is first opened, you will be requested to sign in to verify you are a licensed ENU student/user.

- Sign in with your ENU email address, then select **Continue**.
 - If you are further prompted to select an account type. Choose the **Company or School Account**.

